

67671EX.59.098

Diverter - finish PVD Brushed Pale Gold



PVD Brushed Pale Gold

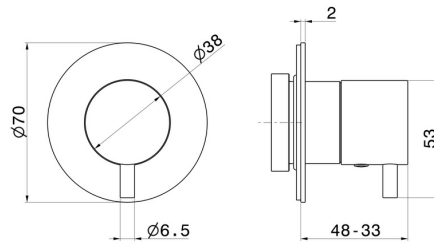


FEATURES

Material	Stainless Steel
Installation	Wall concealed part
Diverter type	Mechanic diverter
Outlets	1 Way Out

Required for installation	<u>27891.00.000</u>
Required for installation	<u>27892.00.000</u>
Required for installation	<u>27893.00.000</u>
Required for installation	<u>27894.00.000</u>
Required for installation	<u>27895.00.000</u>

TECHNICAL DRAWING





67671EX.59.098

Diverter - finish PVD Brushed Pale Gold

AVAILABLE FINISHES



59.098

PVD Brushed Pale Gold



50.050

finish Stainless Steel



59.064

finish PVD Brushed Gun Metal



59.067

finish PVD Brushed Copper Bronze



59.097

finish PVD Brushed Gold