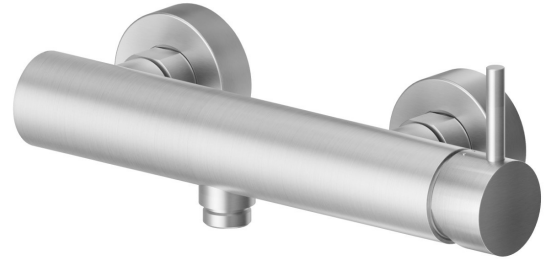
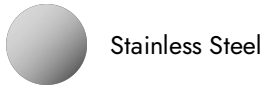


X-STEEL 316

69655X.50.050

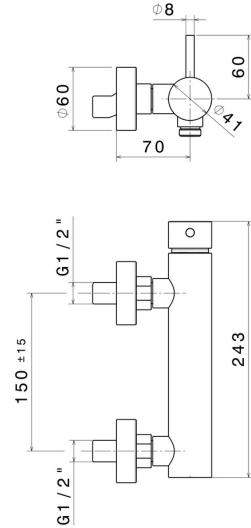
Stainless steel 304 single lever exposed shower mixer - finish
Stainless Steel



FEATURES

Material	Stainless Steel
Installation	Wall mounted
Control type	Single lever
Water mixing	Mechanical

TECHNICAL DRAWING





X-STEEL 316

69655X.50.050

Stainless steel 304 single lever exposed shower mixer - finish Stainless Steel

AVAILABLE FINISHES



50.050

Stainless Steel



59.064

finish PVD Brushed Gun Metal



59.067

finish PVD Brushed Copper Bronze



59.097

finish PVD Brushed Gold



59.098

finish PVD Brushed Pale Gold