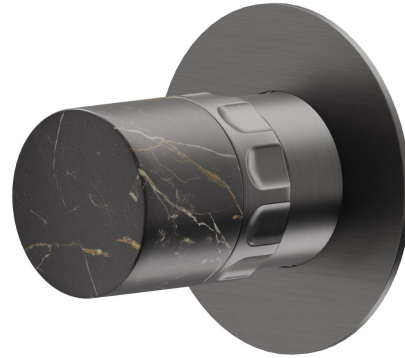


69893E.59.064

Stop valve. External part - finish PVD Brushed Gun Metal

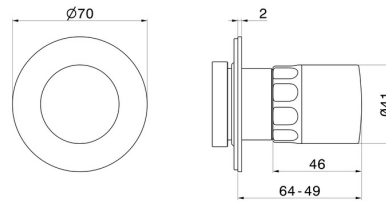


FEATURES

Material	Brass/Marble
Installation	Wall concealed part
Control type	Single lever
Outlets	1 Way Out

Required for installation	<u>27891.00.000</u>
Required for installation	<u>27893.00.000</u>
Required for installation	<u>27892.00.000</u>
Required for installation	<u>27895.00.000</u>

TECHNICAL DRAWING





69893E.59.064

Stop valve. External part - finish PVD Brushed Gun Metal

AVAILABLE FINISHES



59.064

PVD Brushed Gun Metal



01.014

finish Matt White



01.093

finish Matt Black



21.018

finish Chrome



59.066

finish PVD Brushed steel



59.067

finish PVD Brushed Copper Bronze



59.098

finish PVD Brushed Pale Gold



61.020

finish PVD Glossy Gold