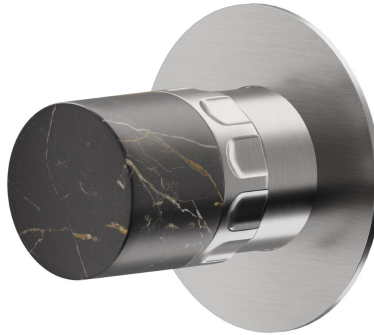


69893E.59.066

Stop valve. External part - finish PVD Brushed steel

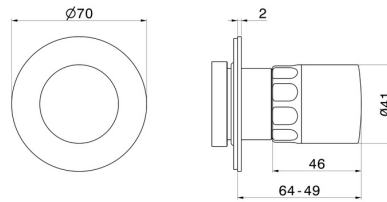


FEATURES

Material	Brass/Marble
Installation	Wall concealed part
Control type	Single lever
Outlets	1 Way Out

Required for installation	<u>27891.00.000</u>
Required for installation	<u>27893.00.000</u>
Required for installation	<u>27892.00.000</u>
Required for installation	<u>27895.00.000</u>

TECHNICAL DRAWING





69893E.59.066

Stop valve. External part - finish PVD Brushed steel

AVAILABLE FINISHES



59.066

PVD Brushed steel



01.014

finish Matt White



01.093

finish Matt Black



21.018

finish Chrome



59.064

finish PVD Brushed Gun Metal



59.067

finish PVD Brushed Copper Bronze



59.098

finish PVD Brushed Pale Gold



61.020

finish PVD Glossy Gold