

67606E.01.014

Stop valve. External part. Ø70 - finish Matt White

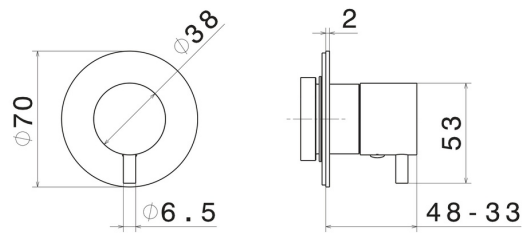


FEATURES

| | |
|---------------|----------------------------|
| Material | Brass |
| Installation | Wall concealed part |
| Diverter type | Mechanic diverter |
| Outlets | 1 Way Out |

| | |
|---------------------------|----------------------------|
| Required for installation | <u>27891.00.000</u> |
| Required for installation | <u>27892.00.000</u> |
| Required for installation | <u>27893.00.000</u> |
| Required for installation | <u>27894.00.000</u> |
| Required for installation | <u>27895.00.000</u> |

TECHNICAL DRAWING





67606E.01.014

Stop valve. External part. Ø70 - finish Matt White

AVAILABLE FINISHES



01.014

Matt White



01.093

finish Matt Black



21.018

finish Chrome



47.083

finish Groove Bronze



58.061

finish PVD Copper Bronze



58.063

finish PVD Gun Metal



59.064

finish PVD Brushed Gun Metal



59.066

finish PVD Brushed steel



59.067

finish PVD Brushed Copper Bronze



59.097

finish PVD Brushed Gold



59.098

finish PVD Brushed Pale Gold



61.020

finish PVD Glossy Gold

 **M0.070**
finish Titanium Satin

 **M0.071**
finish Gold Satin

 **M0.072**
finish Copper Satin

 **M0.075**
finish Copper Glossy

 **M0.077**
finish Carbon Satin