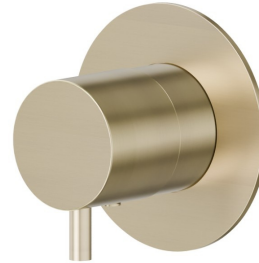


**67606E.59.098**

Stop valve. External part. Ø70 - finish PVD Brushed Pale Gold



PVD Brushed Pale Gold

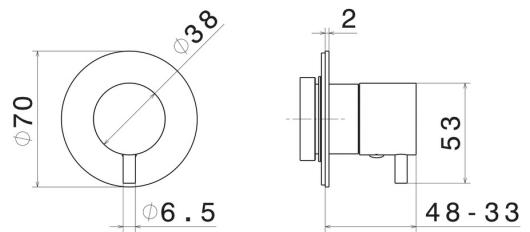


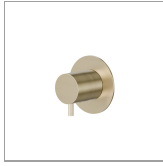
**FEATURES**

Material	<b>Brass</b>
Installation	<b>Wall concealed part</b>
Diverter type	<b>Mechanic diverter</b>
Outlets	<b>1 Way Out</b>

Required for installation	<b><u>27891.00.000</u></b>
Required for installation	<b><u>27892.00.000</u></b>
Required for installation	<b><u>27893.00.000</u></b>
Required for installation	<b><u>27894.00.000</u></b>
Required for installation	<b><u>27895.00.000</u></b>

**TECHNICAL DRAWING**





**67606E.59.098**

Stop valve. External part. Ø70 - finish PVD Brushed Pale Gold

## AVAILABLE FINISHES

---



**59.098**

PVD Brushed Pale Gold



**01.014**

finish Matt White



**01.093**

finish Matt Black



**21.018**

finish Chrome



**47.083**

finish Groove Bronze



**58.061**

finish PVD Copper Bronze



**58.063**

finish PVD Gun Metal



**59.064**

finish PVD Brushed Gun Metal



**59.066**

finish PVD Brushed steel



**59.067**

finish PVD Brushed Copper Bronze



**59.097**

finish PVD Brushed Gold



**61.020**

finish PVD Glossy Gold

 **M0.070**  
finish Titanium Satin

 **M0.071**  
finish Gold Satin

 **M0.072**  
finish Copper Satin

 **M0.075**  
finish Copper Glossy

 **M0.077**  
finish Carbon Satin