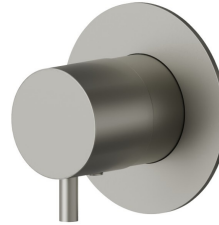


## 67606E.M0.070

Stop valve. External part. Ø70 - finish Titanium Satin



Titanium Satin

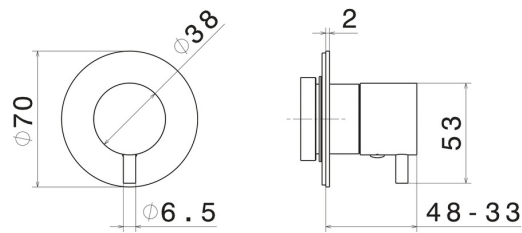


### FEATURES

Material	<b>Brass</b>
Installation	<b>Wall concealed part</b>
Diverter type	<b>Mechanic diverter</b>
Outlets	<b>1 Way Out</b>

Required for installation	<u><b>27891.00.000</b></u>
Required for installation	<u><b>27892.00.000</b></u>
Required for installation	<u><b>27893.00.000</b></u>
Required for installation	<u><b>27894.00.000</b></u>
Required for installation	<u><b>27895.00.000</b></u>

### TECHNICAL DRAWING



**AR Preview**  
try it in your home



**More Details**  
on our [website](#)



**67606E.M0.070**

Stop valve. External part. Ø70 - finish Titanium Satin

**AVAILABLE FINISHES**

---



**M0.070**

Titanium Satin



**01.014**

finish Matt White



**01.093**

finish Matt Black



**21.018**

finish Chrome



**47.083**

finish Groove Bronze



**58.061**

finish PVD Copper Bronze



**58.063**

finish PVD Gun Metal



**59.064**

finish PVD Brushed Gun Metal



**59.066**

finish PVD Brushed steel



**59.067**

finish PVD Brushed Copper Bronze



**59.097**

finish PVD Brushed Gold



**59.098**

finish PVD Brushed Pale Gold



**AR Preview**  
try it in your home



**More Details**  
on our [website](#)



**61.020**

finish PVD Glossy Gold



**M0.071**

finish Gold Satin



**M0.072**

finish Copper Satin



**M0.075**

finish Copper Glossy



**M0.077**

finish Carbon Satin



AR Preview  
try it in your home



More Details  
on our [website](#)