

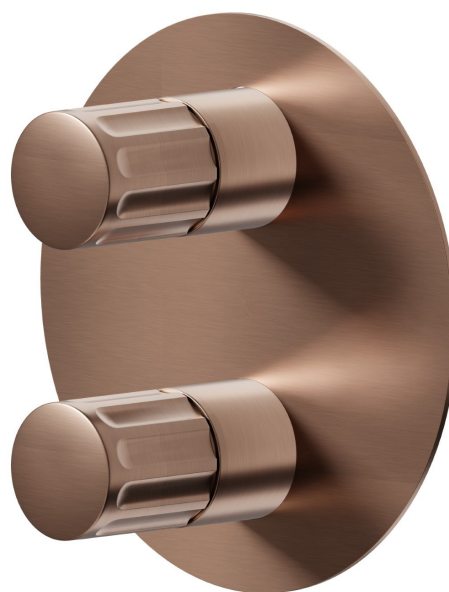
## 72874E.59.067

Miscelatore monocomando ad incasso - finitura PVD Brushed Copper Bronze

Parte esterna. Con deviatore meccanico a 2 uscite, ingressi ed uscite da 1/2"



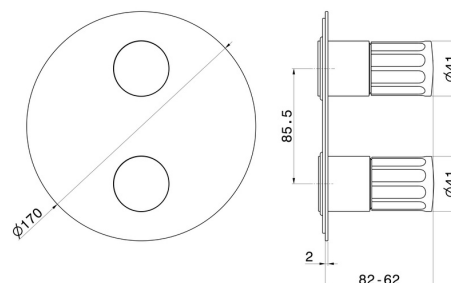
PVD Brushed Copper Bronze

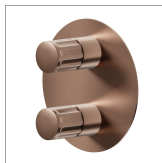


### CARATTERISTICHE

Materiale	<b>Ottone</b>
Installazione	<b>Incasso a parete</b>
Tipologia di comando	<b>Monocomando</b>
Uscite	<b>2 Uscite</b>
Miscelazione dell' acqua	<b>Meccanica</b>
Necessari per l'installazione	<b><u>31087.00.000</u></b>

### DISEGNO TECNICO





**72874E.59.067**

Miscelatore monocomando ad incasso - finitura PVD Brushed Copper Bronze

## FINITURE DISPONIBILI


---

 **59.067**  
PVD Brushed Copper Bronze


 **01.014**  
finitura Bianco opaco


 **01.093**  
finitura Nero opaco

 **21.018**  
finitura Cromo

 **59.064**  
finitura PVD Brushed Gun Metal

 **59.066**  
finitura PVD Acciaio Spazzolato

 **59.098**  
finitura PVD Brushed Pale Gold

 **61.020**  
finitura PVD Glossy Gold