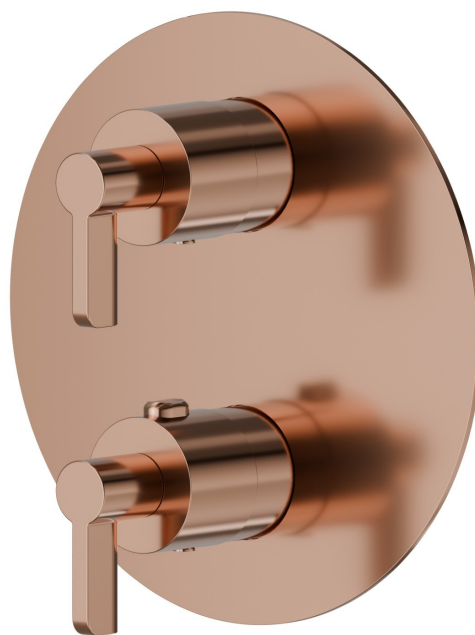


## 73421E.58.061

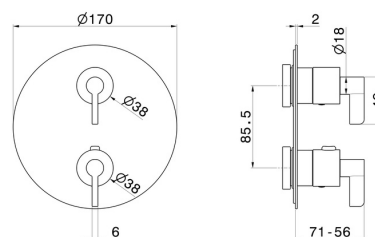
Miscelatore termostatico ad incasso, con comando per la regolazione della temperatura e deviatore a 2 uscite. Parte esterna. Ø170 - finitura PVD Copper Bronze

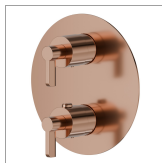


### CARATTERISTICHE

Materiale	<b>Ottone</b>
Installazione	<b>Incasso a parete</b>
Tipologia di comando	<b>Monocomando</b>
Tipologia deviatore	<b>Con deviatore Meccanico</b>
Uscite	<b>2 Uscite</b>
Miscelazione dell' acqua	<b>Termostatica</b>
Necessari per l'installazione	<b><u>31020.00.000</u></b>
Necessari per l'installazione	<b><u>31061.00.000</u></b>

### DISEGNO TECNICO







**73421E.58.061**


Miscelatore termostatico ad incasso, con comando per la regolazione della temperatura e deviatore a 2 uscite. Parte esterna. Ø170 - finitura PVD Copper Bronze


**FINITURE DISPONIBILI**


---

 **58.061**  
PVD Copper Bronze


 **01.093**  
finitura Nero opaco

 **21.018**  
finitura Cromo

 **47.083**  
finitura Groove Bronze

 **58.063**  
finitura PVD Gun Metal

 **59.098**  
finitura PVD Brushed Pale Gold

 **61.020**  
finitura PVD Glossy Gold