

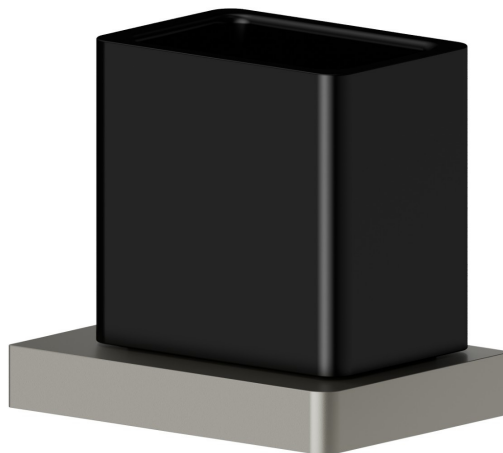
ACCESSORI QUADRI

62906.M0.070

Porta bicchiere a muro. Ceramica Nera - finitura Titanium Satin



Titanium Satin



CARATTERISTICHE

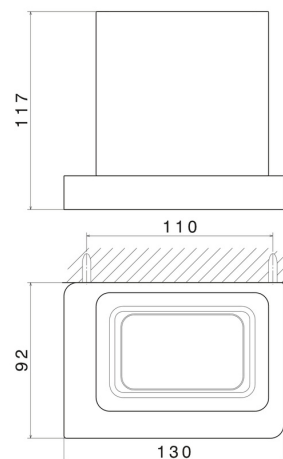
Materiale

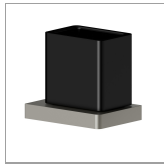
Ceramica

Installazione

A parete

DISEGNO TECNICO





ACCESSORI QUADRI

62906.M0.070

Porta bicchiere a muro. Ceramica Nera - finitura Titanium Satin

FINITURE DISPONIBILI



M0.070

Titanium Satin



01.014

finitura Bianco opaco



01.093

finitura Nero opaco



21.018

finitura Cromo



58.061

finitura PVD Copper Bronze



58.063

finitura PVD Gun Metal



59.064

finitura PVD Brushed Gun Metal



59.066

finitura PVD Acciaio Spazzolato



59.067

finitura PVD Brushed Copper Bronze



59.097

finitura PVD Brushed Gold



61.020


finitura PVD Glossy Gold



M0.071

finitura Gold Satin

 **M0.072**
finitura Copper Satin

 **M0.075**
finitura Copper Glossy