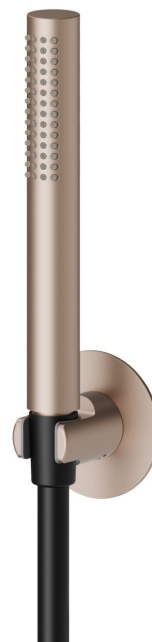


866.M0.072

Set doccia completo di doccetta in ottone e flessibile. - finitura
Copper Satin



CARATTERISTICHE

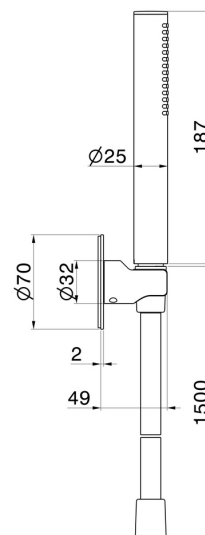
Materiale

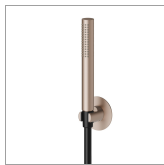
Ottone

Installazione

A parete

DISEGNO TECNICO





866.M0.072

Set doccia completo di doccetta in ottone e flessibile. - finitura Copper Satin

FINITURE DISPONIBILI

-  **M0.072**
Copper Satin
-  **01.014**
finitura Bianco opaco
-  **01.093**
finitura Nero opaco
-  **21.018**
finitura Cromo
-  **47.083**
finitura Groove Bronze
-  **58.061**
finitura PVD Copper Bronze
-  **58.063**
finitura PVD Gun Metal
-  **59.064**
finitura PVD Brushed Gun Metal
-  **59.066**
finitura PVD Acciaio Spazzolato
-  **59.067**
finitura PVD Brushed Copper Bronze
-  **59.097**
finitura PVD Brushed Gold
-  **59.098**
finitura PVD Brushed Pale Gold

 **61.020**
finitura PVD Glossy Gold

 **M0.070**
finitura Titanium Satin

 **M0.071**
finitura Gold Satin

 **M0.075**
finitura Copper Glossy

 **M0.077**
finitura Carbon Satin