

X-STEEL 316

69691X.50.050

Bec de baignoire sur plan - finition Stainless Steel



Stainless Steel



CARACTÉRISTIQUES

Matériau

Acier inox

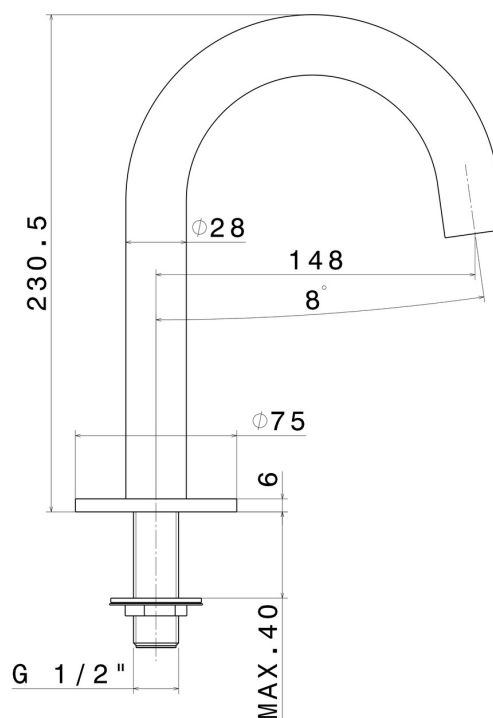
Installation

Bord de baignoire

Type de perçage

Monotrou

DESSIN TECHNIQUE





X-STEEL 316

69691X.50.050

Bec de baignoire sur plan - finition Stainless Steel


FINITIONS DISPONIBLES

 **50.050**
Stainless Steel

 **59.064**
finition PVD Brushed Gun Metal

 **59.067**
finition PVD Brushed Copper Bronze

 **59.097**
finition PVD Brushed Gold

 **59.098**
finition PVD Brushed Pale Gold