

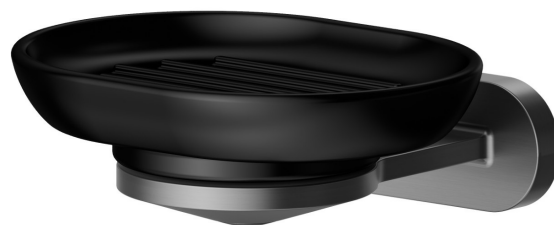
# ACCESSOIRES RONDS

**67201.59.064**

Porte-savon mural. Céramique noire - finition PVD Brushed Gun Metal



PVD Brushed Gun Metal



## CARACTÉRISTIQUES

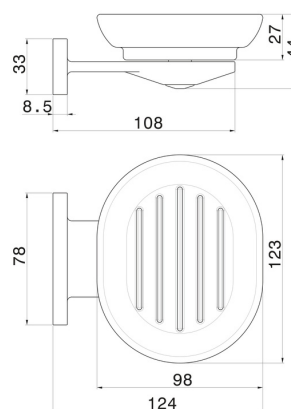
Matériau

**Céramique**

Installation

**Murale**

## DESSIN TECHNIQUE





## ACCESSOIRES RONDS

**67201.59.064**

Porte-savon mural. Céramique noire - finition PVD Brushed Gun Metal

### FINITIONS DISPONIBLES

---



**59.064**

PVD Brushed Gun Metal



**01.014**

finition Matt White



**01.093**

finition Matt Black



**21.018**

finition Chrome



**47.083**

finition Groove Bronze



**58.061**

finition PVD Copper Bronze



**58.063**

finition PVD Gun Metal



**59.066**

finition PVD Brushed steel



**59.067**

finition PVD Brushed Copper Bronze



**59.097**

finition PVD Brushed Gold



**59.098**

finition PVD Brushed Pale Gold



**61.020**

finition PVD Glossy Gold

 **MO.070**  
finition Titanium Satin

 **MO.071**  
finition Gold Satin

 **MO.072**  
finition Copper Satin

 **MO.075**  
finition Copper Glossy

 **MO.077**  
finition Carbon Satin