

HAKA

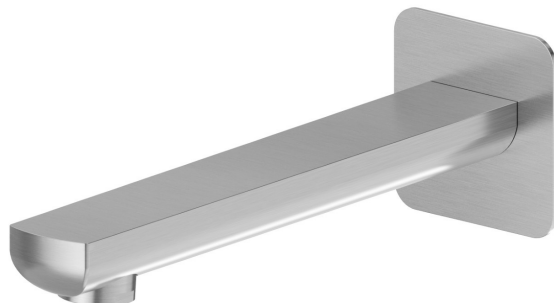
72088.59.066

Wall spout for bath group with 1/2" connection - finition PVD
Brushed steel

L=211 mm. Ø75



PVD Brushed steel



CARACTÉRISTIQUES

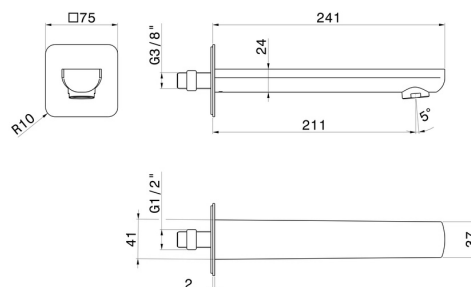
Matériau

Laiton

Installation

Murale

DESSIN TECHNIQUE





HAKA

72088.59.066

Wall spout for bath group with 1/2" connection - finition PVD Brushed steel

FINITIONS DISPONIBLES



59.066

PVD Brushed steel



01.014

finition Matt White



01.093

finition Matt Black



21.018

finition Chrome



59.064

finition PVD Brushed Gun Metal



59.067

finition PVD Brushed Copper Bronze



59.097

finition PVD Brushed Gold